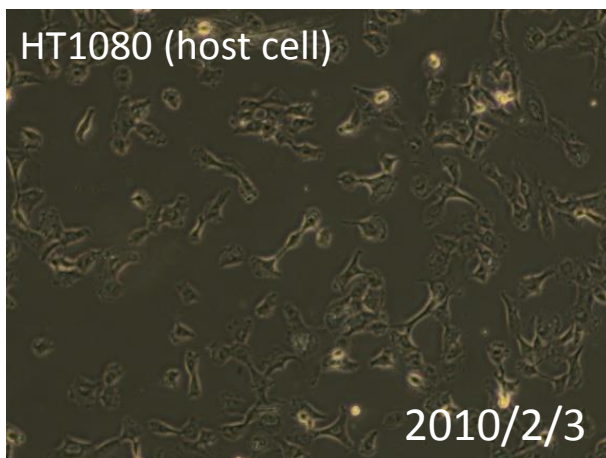
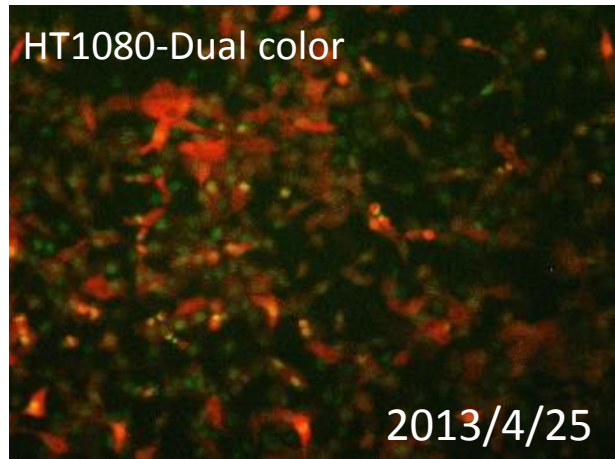
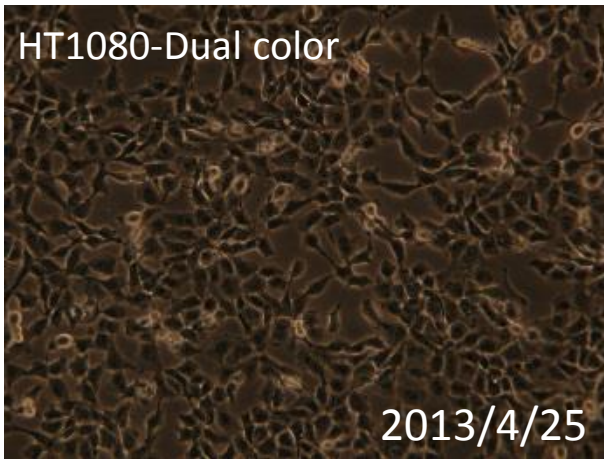


091-092 HT1080-Dual color

要旨

HT1080-Dual color細胞は、ヒト線維肉腫由来HT1080細胞に対して、ヒトヒストンB1-緑色蛍光タンパク質(EGFP)遺伝子を含むレトロウイルスベクターpFBと、赤色蛍光タンパク質(DsRed2)遺伝子を含むレトロウイルスベクターpLNCX2による遺伝子組換えを行って作製した細胞である。顕微鏡観察から、蛍光を発する細胞の割合は、96%であった。Short tandem repeats (STR)-PCR法による解析では、JCRB等のHT1080と同一と認証された。

Microscopic images



091-092 HT1080-Dual color

STR-profile

KBN0116

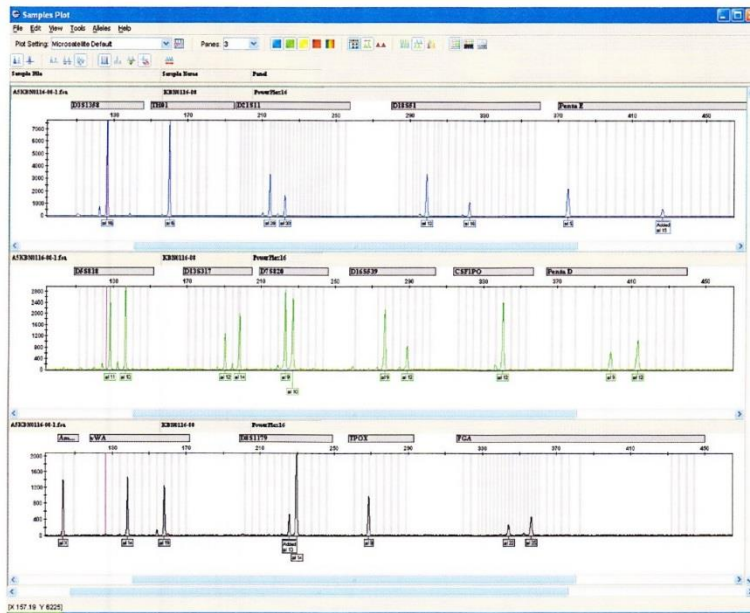
Summary (Cell No. : KBN0116_08)

It was confirmed that the cell (Cell No.: KBN0116_08, Cell Name: cell-052) was the same as the cell registered in JCRB (JCRB9113 HT-1080), the cell registered in DSMZ (ACC 315 HT-1080), the cell registered in ATCC (CCL-121 HT-1080), and the cell registered in RCB (RCB1956 HT1080), by the comparison with the database of JCRB Cell Bank.

Furthermore, it was confirmed that this cell was the same as that also of KBN0116_09 (Cell Name: cell-053), and KBN0116_10 (Cell Name: cell-054).

KBN0116

Peak report (Cell No. : KBN0116_08)



STR Profile (Cell No. : KBN0116_08)

D3S1358	TH01	D21S11	D18S18	Penta E	D16S19	D13S317	D7S820
16	6	28,30	12,18	5,15	11,13	12,14	9,10
D16S539	GSF1PO	Penta D	AM	YWA	D8S1179	TPOX	FGA
9,12	12	9,12	X	14,19	13,14	8	22,25

Comparison with database (Cell No : KBN0116_08)

Cell No.	Cell Name	Lot No.	FV	D5S818	D19S317	D7S820	D16S539	YWA	TH01	AM	TPOX	GSF1PO
KBN0116-08	cell-052	04302013	1.000	11,13	12,14	8,10	8,12	14,19	6	X	8	12
KBN0116-09	cell-052	04302013	1.000	11,13	12,14	8,10	8,12	14,19	6	X	8	12
KBN0116-10	cell-054	04302013	1.000	11,13	12,14	8,10	8,12	14,19	6	X	8	12
JCRB9113	HT-1080	040495	0.866	11,13	12,14	8,10	8,12	14,19	6	X,Y	8	12
ACC 315	HT-1080	-----	0.866	11,13	12,14	8,10	8,12	14,19	6	X,Y	8	12
CCL-121	HT-1080	-----	0.866	11,13	12,14	8,10	8,12	14,19	6	X,Y	8	12
RCB1956	HT1080	-----	0.866	11,13	12,14	8,10	8,12	14,19	6	X,Y	8	12
RCB2287	HE51	-----	0.786	11,13	8,12	10,12	8,12	14	6,8	X	6	12
RCB2347	NMS-2	-----	0.714	12,13	12	8,12	8	14,19	6	X,Y	8,8	12
IFC0107	G-292 clone A141B1	241	0.692	12,13	8,14	9	12	14	6	X	8	11,12
HTB-105	Tara-1	-----	0.667	11,13	12	8,10	10,12	14	7,8	X	8	11
KBN0116-08	cell-052	04302013	1.000	11,13	12,14	8,10	8,12	14,19	6	X	8	12