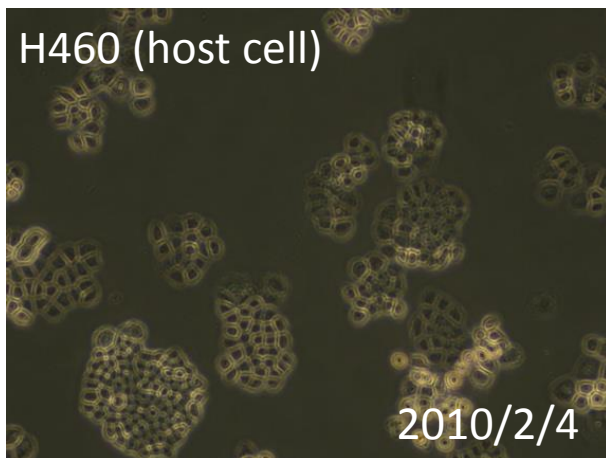
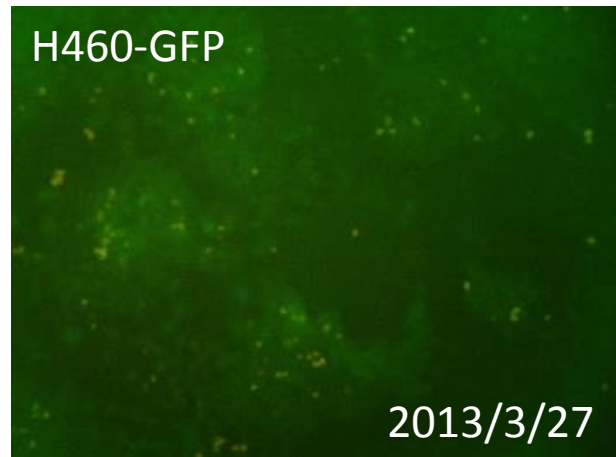
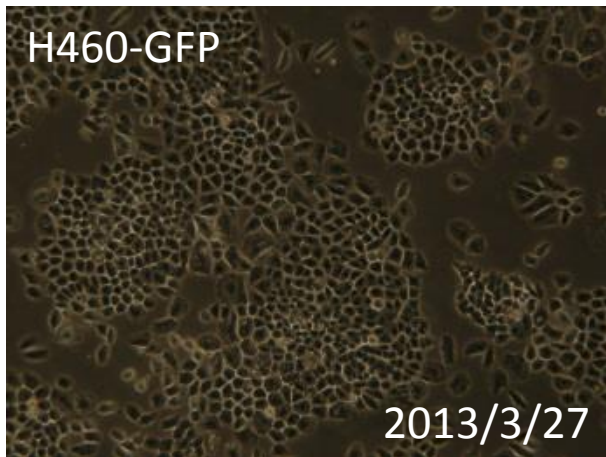


091-046 H460-GFP

要旨

H460-GFP細胞は、ヒト肺がん由来H460細胞に対して、緑色蛍光タンパク質(EGFP)遺伝子を含むレトロウイルスベクターpFBIによる遺伝子組換えを行って作製した細胞である。顕微鏡観察から、蛍光を発する細胞の割合は、85%であった。Short tandem repeats (STR)-PCR法による解析では、ATCC、JCRBのH460と同一と認証された。

Microscopic images



STR-profile

KBN0111

Summary (Cell No. : KBN0111_02)

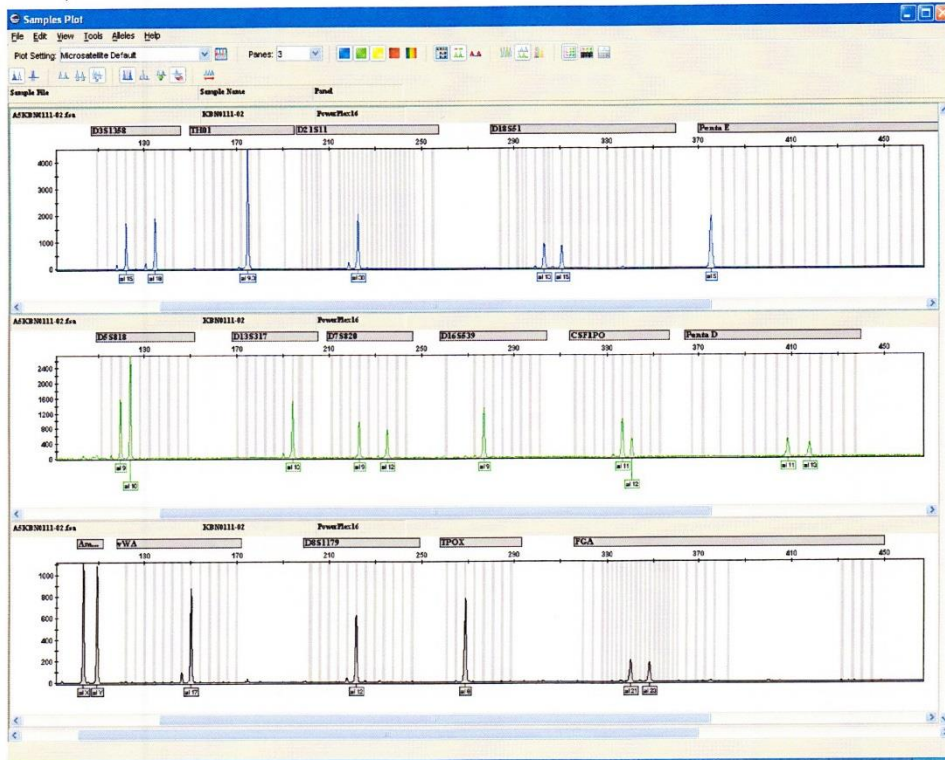
It was confirmed that the cell (Cell No. : KBN0111_02, Cell Name: cell-016) was the same as the cell registered in ATCC (HTB-177 NCI-H460), and the cell registered in JCRB (JCRB1407 NCI-H460-Luc), by the comparison with the database of JCRB Cell Bank.

Furthermore, it was confirmed that this cell was the same as that also of KBN0111_08 (Cell Name: cell-022).

STR-profile

KBN0111

Peak report (Cell No. : KBN0111_02)



STR Profile (Cell No. : KBN0111_02)

D3S1358	TH01	D21S11	D18S51	Penta_E	D5S818	D13S317	D7S820
15,18	9,3	30	13,15	5	9,10	13	9,12
D16S539	CSF1PO	Penta_D	AM	VWA	D8S1179	TPOX	FGA
9	11,12	11,13	X,Y	17	12	8	21,23

Comparison with database (Cell No. : KBN0111_02)

Cell No.	Cell Name	Lot No.	EV	D5S818	D13S317	D7S820	D16S539	VWA	TH01	AM	TPOX	CSF1PO
KBN0111-02	cell-016	03252013	1.000	9,10	13	9,12	9	17	9,3	X,Y	8	11,12
HTB-177	NCI-H460	atcc_web	1.000	9,10	13	9,12	9	17	9,3	X,Y	8	11,12
KBN0111-08	cell-022	03252013	1.000	9,10	13	9,12	9	17	9,3	X,Y	8	11,12
JCRB1407	NCI-H460-Luc	05172011	0.963	9,10	13	9,12	9	17,18	9,3	X,Y	8	11,12
IFC050303	T88G	687	0.643	10,12	13	9,10	13	17,20	7,9,3	X,Y	8	10,12
JCRB1169	Yub636	08222006	0.643	9,11	8,13	9,12	9,10	14,16	9	X,Y	8	12
JCRB9041	T88G	120492	0.643	10,12	13	9,10	13	17,20	7,9,3	X,Y	8	10,12
JCRB1505	Ishikawa 3-H-12	12072012	0.621	10,11	9,12,13	9,10	9	14,17	9,10	X	8	11,12
JCRB1502	MDA-MB-361-Luc#1	1282013	0.615	10,11	11	9,12	11,12	17	9,3	X	8,11	12
JCRB1415	KasumiA-568	07042011	0.593	10,11	8,12	12	9,11	17	7	X,Y	8	12,13
JCRB1461	KMP6	03132012	0.583	10	10	11,12	9	17,18	9	X	8	12
KBN0111-02	cell-016	03252013	1.000	9,10	13	9,12	9	17	9,3	X,Y	8	11,12