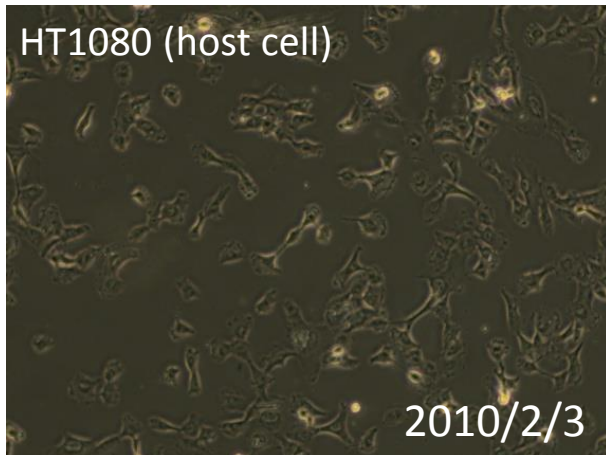
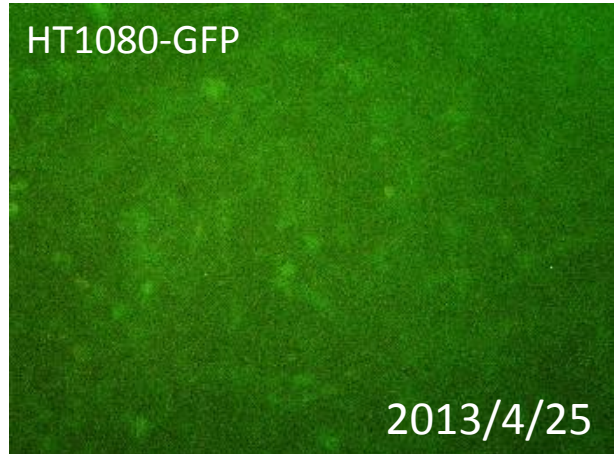
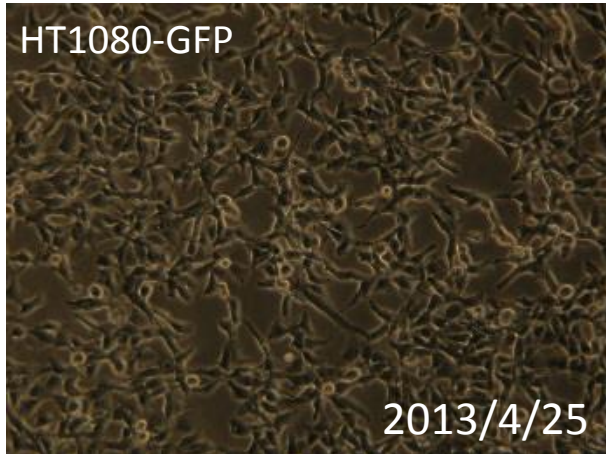


## 091-037 HT1080-GFP

### 要旨

HT1080-GFP細胞は、ヒト線維肉腫由来HT1080細胞に対して、緑色蛍光タンパク質（EGFP）遺伝子を含むレトロウイルスベクターpFBによる遺伝子組換えを行って作製した細胞である。顕微鏡観察から、蛍光を発する細胞の割合は、65%であった。Short tandem repeats (STR)-PCR法による解析では、JCRB等のHT1080と同一と認証された。

### Microscopic images



STR-profile

KBN0116

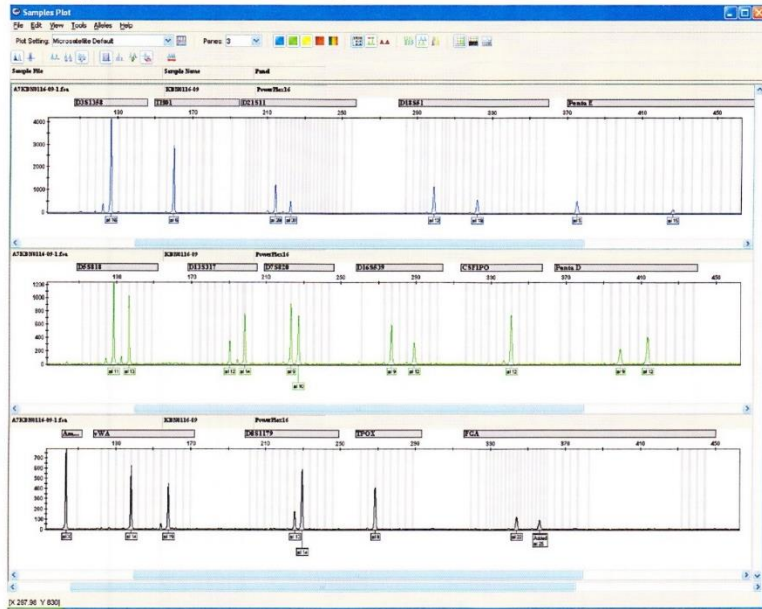
Summary (Cell No. : KBN0116\_09)

It was confirmed that the cell (Cell No.: KBN0116\_09, Cell Name: cell-053) was the same as the cell registered in JCRB (JCRB9113 HT-1080), the cell registered in DSMZ (ACC 315 HT-1080), the cell registered in ATCC (CCL-121 HT-1080), and the cell registered in RCB (RCB1956 HT1080), by the comparison with the database of JCRB Cell Bank.

Furthermore, it was confirmed that this cell was the same as that also of KBN0116\_08 (Cell Name: cell-052), and KBN0116\_10 (Cell Name: cell-054).

KBN0116

Peak report (Cell No. : KBN0116\_09)



STR Profile (Cell No. : KBN0116\_09)

|         |        |         |        |         |         |         |        |
|---------|--------|---------|--------|---------|---------|---------|--------|
| D3S1358 | TH01   | D21S11  | D16S51 | Penta.E | D6S10   | D13S317 | D7S820 |
| 18      | 8      | 28,30   | 12,18  | 5,15    | 11,19   | 12,14   | 9,10   |
| D16S53p | GCF1PQ | Penta.D | AM     | VWA     | D6S117p | TPOX    | FGA    |
| 9,12    | 12     | 9,12    | X      | 14,19   | 13,14   | 8       | 22,25  |

Comparison with database (Cell No : KBN0116\_09)

| Cell No.   | Cell Name          | Lot No.  | EV    | D5S818 | D13S317 | D7S820 | D16S53p | VWA   | TH01 | AM  | TPOX | GCF1PQ |
|------------|--------------------|----------|-------|--------|---------|--------|---------|-------|------|-----|------|--------|
| KBN0116-09 | cell-053           | 04502019 | 1.000 | 11,13  | 12,14   | 9,10   | 9,12    | 14,19 | 8    | X   | 8    | 12     |
| KBN0116-08 | cell-052           | 04502013 | 1.000 | 11,13  | 12,14   | 9,10   | 9,12    | 14,19 | 8    | X   | 8    | 12     |
| KBN0116-10 | cell-054           | 04502013 | 1.000 | 11,13  | 12,14   | 9,10   | 9,12    | 14,19 | 8    | X   | 8    | 12     |
| JCRB9113   | HT-1080            | 040485   | 0.966 | 11,13  | 12,14   | 9,10   | 9,12    | 14,19 | 8    | X,Y | 8    | 12     |
| ACC 315    | HT-1080            | -----    | 0.966 | 11,13  | 12,14   | 9,10   | 9,12    | 14,19 | 8    | X,Y | 8    | 12     |
| CCL-121    | HT-1080            | -----    | 0.966 | 11,13  | 12,14   | 9,10   | 9,12    | 14,19 | 8    | X,Y | 8    | 12     |
| RCB1956    | HT1080             | -----    | 0.966 | 11,13  | 12,14   | 9,10   | 9,12    | 14,19 | 8    | X,Y | 8    | 12     |
| RCB2287    | HE51               | -----    | 0.766 | 11,13  | 12      | 10,12  | 12      | 14    | 8,8  | X   | 8    | 12     |
| RCB2347    | NMS-2              | -----    | 0.714 | 12,13  | 12      | 8,12   | 9       | 14,19 | 8    | X,Y | 8,9  | 12     |
| IF01017    | G-292 clone A141B1 | 241      | 0.892 | 12,13  | 8,14    | 8      | 12      | 14    | 6    | X   | 8    | 11,12  |
| HT10-105   | Texas1             | -----    | 0.857 | 11,13  | 12      | 9,10   | 10,12   | 14    | 7,8  | X   | 8    | 11     |
| KBN0116-09 | cell-053           | 04502019 | 1.000 | 11,13  | 12,14   | 9,10   | 9,12    | 14,19 | 8    | X   | 8    | 12     |