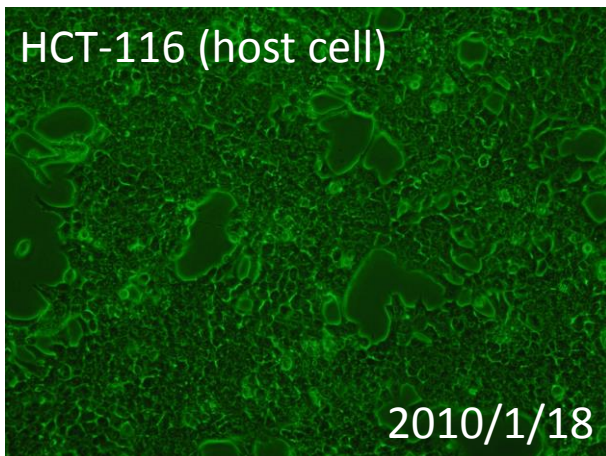
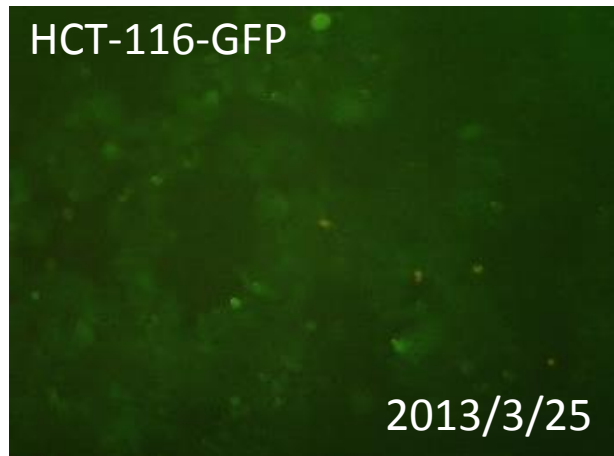
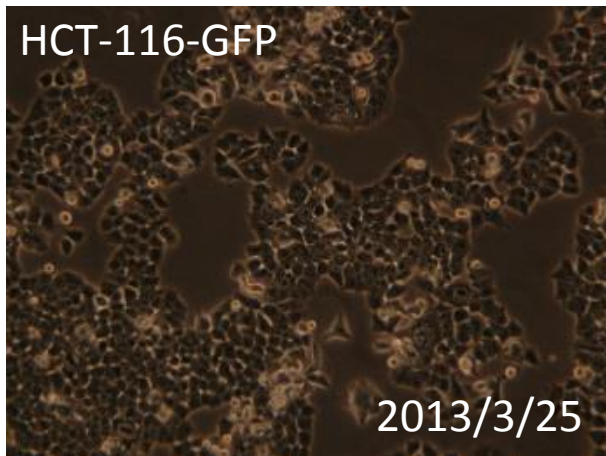


091-025 HCT-116-GFP

要旨

HCT-116-GFP細胞は、ヒト大腸がん由来HCT-116細胞に対して、緑色蛍光タンパク質 (EGFP) 遺伝子を含むレトロウイルスベクター-pFBによる遺伝子組換えを行って作製した細胞である。顕微鏡観察から、蛍光を発する細胞の割合は、81%であった。Short tandem repeats (STR)-PCR法による解析では、ATCC、DSMZのHCT-116と同一と認証された。

Microscopic images



STR-profile

KBN0110

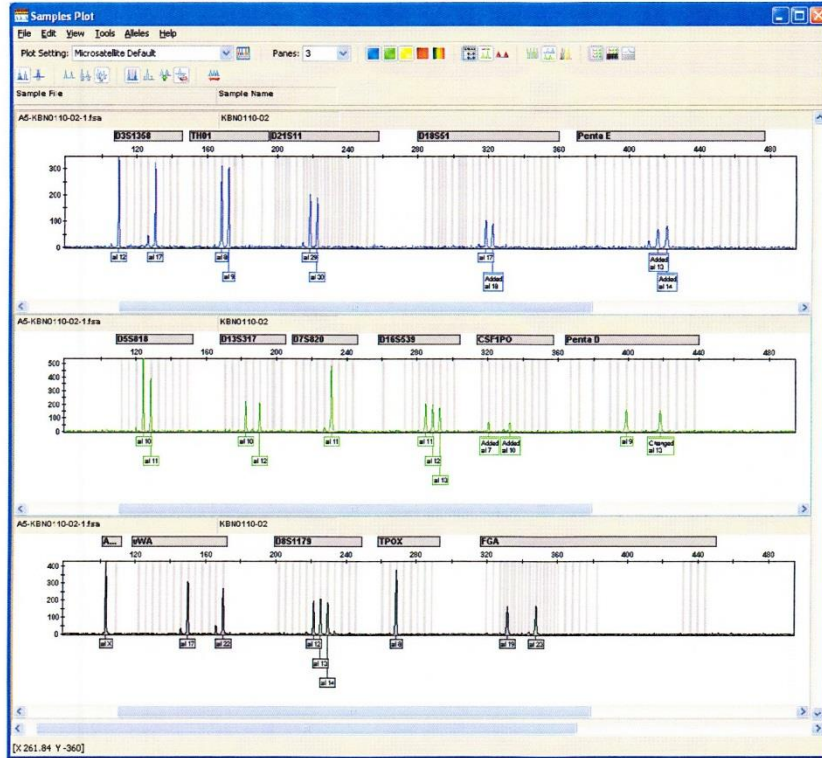
Summary (Cell No. : KBN0110_02)

It was confirmed that the cell (Cell No. : KBN0110_02, Cell Name: cell-006) was the same as the cell registered in DSMZ (ACC581 HCT-116), and the cell registered in ATCC (CCL-247 HCT 116), by the comparison with the database of JCRB Cell Bank.

STR-profile

KBN0110

Peak report (Cell No. : KBN0110_02)



STR Profile (Cell No. : KBN0110_02)

| | | | | | | | |
|----------------|---------------|----------------|---------------|----------------|----------------|----------------|---------------|
| D3S1358 | TH01 | D21S11 | D18S51 | Penta E | D5S818 | D13S317 | D7S820 |
| 12,17 | 8,9 | 29,30 | 17,18 | 13,14 | 10,11 | 10,12 | 11 |
| D16S539 | CSFIPO | Penta D | AM | VWA | D8S1179 | TPOX | FGA |
| 11,12,13 | 7,10 | 9,13 | X | 17,22 | 12,13,14 | 8 | 19,23 |

Comparison with database (Cell No. : KBN0110_02)

| Cell No. | Cell Name | Lot No. | EV | D5S818 | D13S317 | D7S820 | D16S539 | VWA | TH01 | AM | TPOX | CSFIPO |
|------------|-----------|----------|-------|--------|---------|--------|----------|-------|------|-----|------|--------|
| KBN0110-02 | cell-006 | 03212013 | 1.000 | 10,11 | 10,12 | 11 | 11,12,13 | 17,22 | 8,9 | X | 8 | 7,10 |
| ACC 581 | HCT-116 | DSMZ_web | 0.903 | 10,11 | 10,12 | 11,12 | 11,13 | 17 | 8,9 | X | 8 | 7,10 |
| CCL-247 | HCT 116 | atcc_web | 0.882 | 10,11 | 10,12 | 11,12 | 11,13 | 17,22 | 8,9 | X,Y | 8,9 | 7,10 |
| JCRB0256 | RCM-1 | 110698 | 0.645 | 11,12 | 10,12 | 11,12 | 11,12 | 20 | 9 | X | 8,11 | 10,12 |
| JCRB1188 | KMS-27 | 03202007 | 0.625 | 10,12 | 10,11 | 11 | 11,12 | 14,17 | 6,9 | X,Y | 8 | 10,12 |
| JCRB1462 | KYSE1250 | 03232012 | 0.621 | 13 | 12 | 8,11 | 9,11 | 14,17 | 8,9 | X | 8 | 10 |
| JCRB0318 | FPC5_JTO | 02172011 | 0.606 | 10,11 | 12 | 11,12 | 10,12 | 17,19 | 7,9 | X,Y | 8,11 | 10,12 |
| JCRB0101 | AS/KAW | 010788 | 0.600 | 10,11 | 10,12 | 11,12 | 10 | 17 | 7,9 | X | 8 | 11,12 |
| JCRB0257 | CoCM-1 | 111798 | 0.600 | 11,12 | 10 | 9,11 | 12,13 | 16,17 | 7,9 | X | 8 | 12 |
| JCRB0816 | SBC-1 | 041796 | 0.600 | 9,11 | 12 | 11,12 | 9 | 14,17 | 8,9 | X | 8 | 10,12 |
| JCRB0817 | SBC-2 | 070996 | 0.600 | 9,11 | 12 | 11,12 | 9 | 14,17 | 8,9 | X | 8 | 10,12 |
| KBN0110-02 | cell-006 | 03212013 | 1.000 | 10,11 | 10,12 | 11 | 11,12,13 | 17,22 | 8,9 | X | 8 | 7,10 |